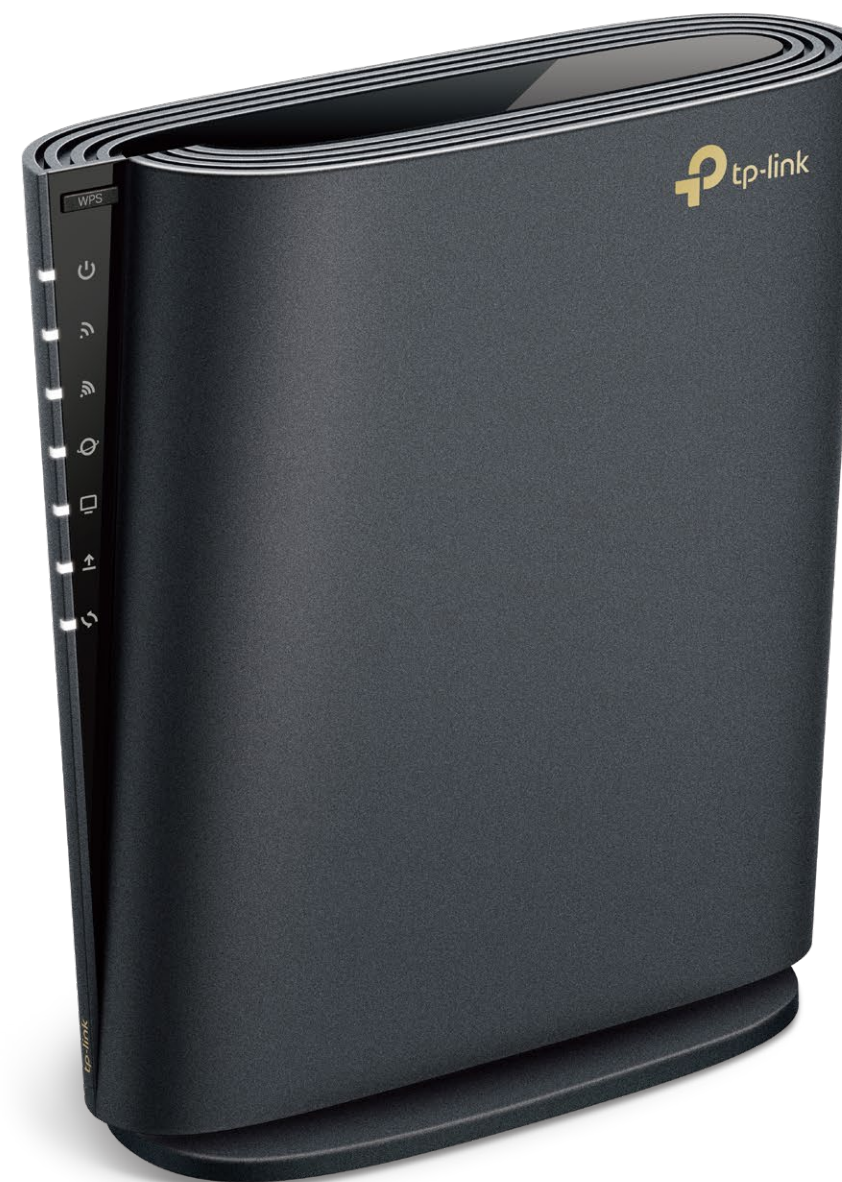





AX5400 Wi-Fi 6 Router


Faster. Broader. Unstoppable.



Archer AX5400

 Super-Fast Wi-Fi
up to 5400 Mbps

 Expanded Coverage
Throughout Your Home

 Connect More Devices
OFDMA

 Go Faster with Full Gigabit
Ports

Highlights

Wi-Fi 6 Faster. Broader. Unstoppable.

The Archer AX5400, based on the next generation 802.11ax Wi-Fi technology, takes your Wi-Fi to the next level while being backwards compatible with 802.11a/b/g/n/ac Wi-Fi standards.



Super Fast Wi-Fi

Enjoy full access to 8K streaming and high-speed downloading with HE160 on the 5 GHz band providing doubled bandwidth.



Connect Numerous Devices

Allow more applications to run at the same time. OFDMA transmits data to multiple devices simultaneously across 4 streams, drastically reducing latency.



Smart Power Saving

Conserve the power of your mobile devices by scheduling the connection time of battery-powered devices with Target Wake Time.



Backwards Compatible

Take your Wi-Fi to the next level while being backwards compatible with 802.11a/b/g/n/ac Wi-Fi standards.

TP-Link HomeShield

TP-Link's premium security services keep your home network safe with cutting-edge features for network and IoT protection.



Network Protection

Detect cyber threats to keep your privacy and connected devices well protected.



Quality of Service (QoS)

Prioritize your bandwidth needs to get a better networking experience.



Parental Controls

Manage online time and block inappropriate content to keep families healthy online.



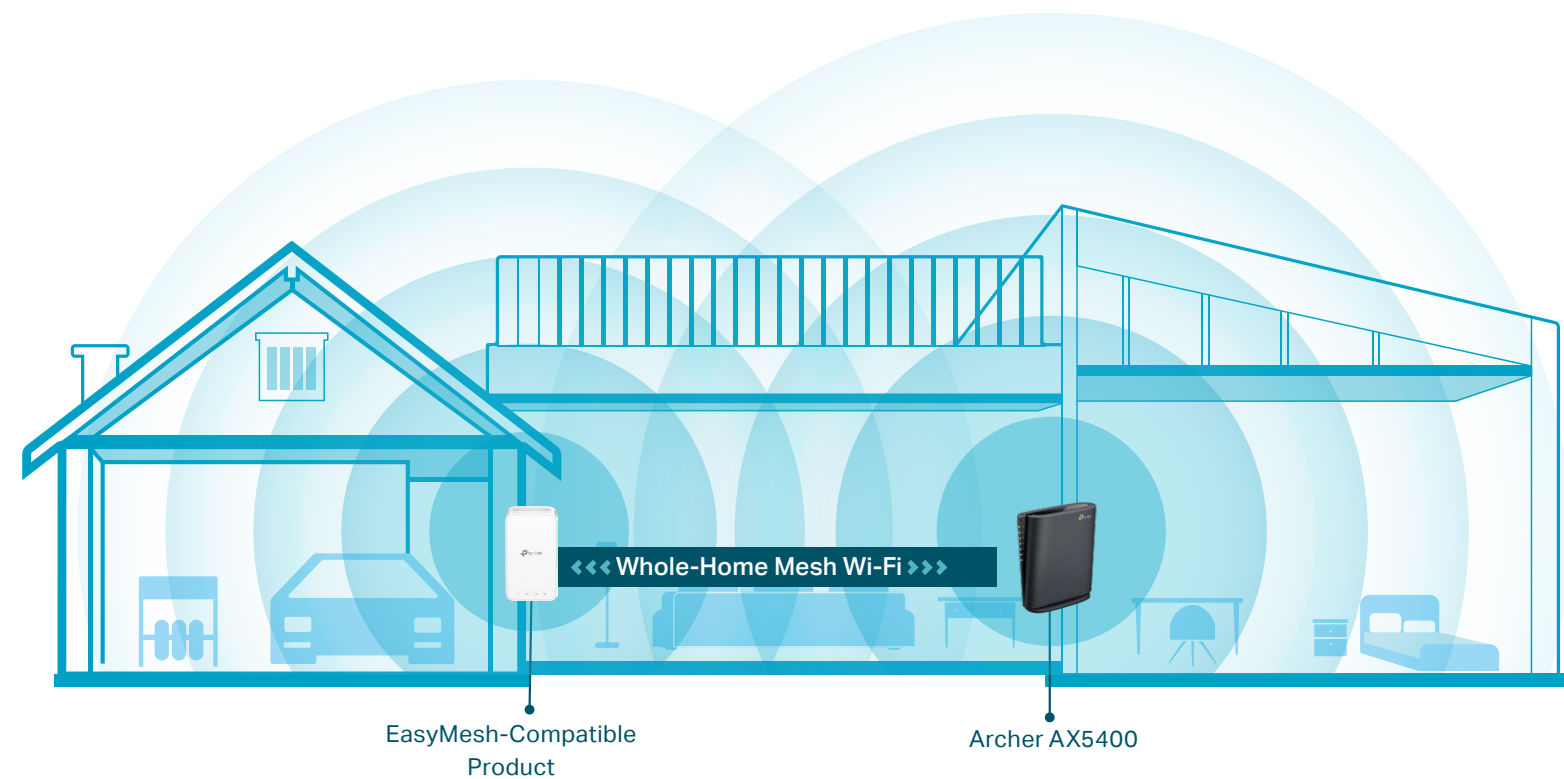
Comprehensive Reports

Gain full statistics and insights to help you know your home network better.

Highlights

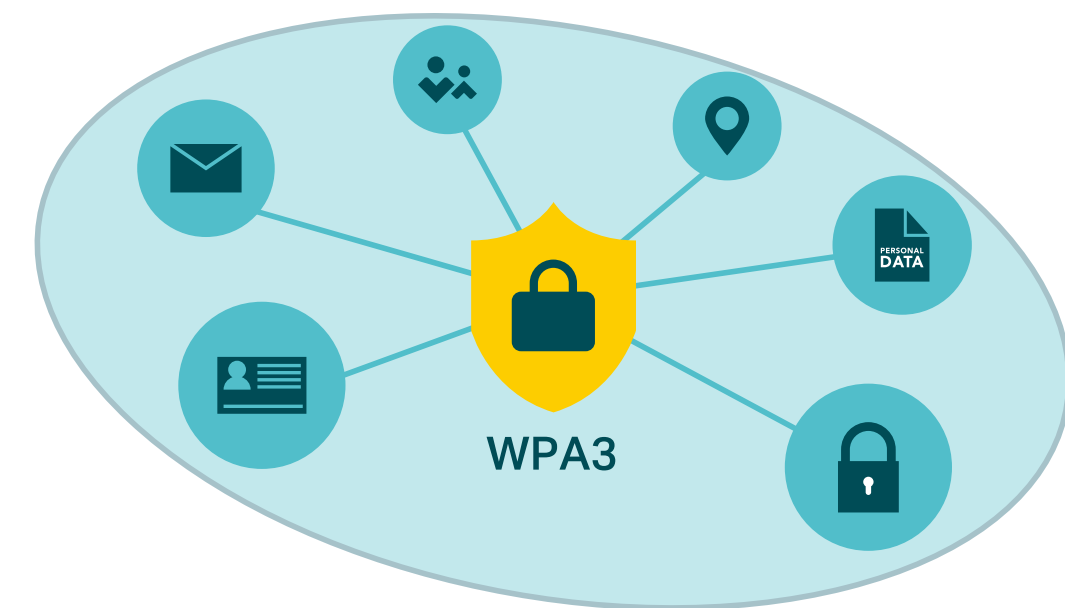
Convenient Mesh Networking

Mesh networking creates smooth, fast, stable roaming. Archer AX5400 can build an EasyMesh network with extenders that use EasyMesh technology. It also works with other TP-Link OneMesh products to create a TP-Link OneMesh network. Eliminate Wi-Fi dead zones, expand your network, and fill your entire home with high-speed Wi-Fi.



WPA3 Security

The latest Wi-Fi security protocol, WPA3, brings new capabilities to improve cybersecurity. More secure encryption in Wi-Fi password safety and enhanced protection against brute-force attacks combine to safeguard your home Wi-Fi.



Features



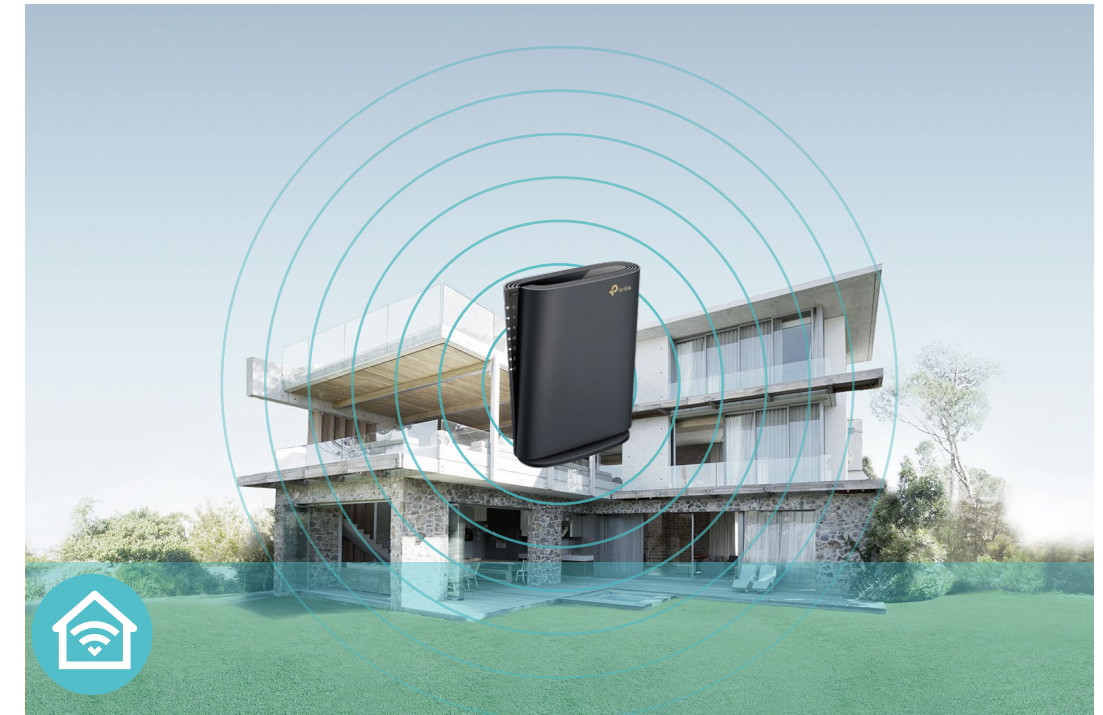
Speeds

- Super-Fast Wi-Fi – 5.4 Gbps Wi-Fi for faster browsing, streaming, and downloading—all at the same time
- Connect More, Stay Fast – The new Wi-Fi 6 standard reduces congestion and quadruples your average throughput.



Reliability

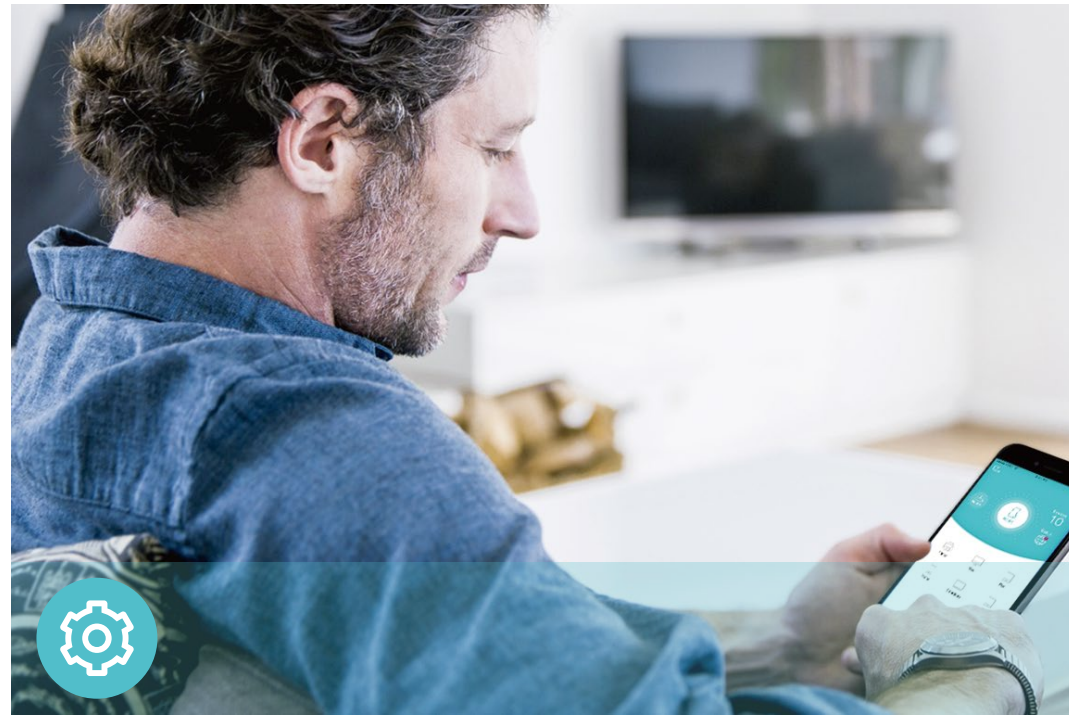
- VPN Clients and Server Supported – With VPN client support, AX5400 allows specified devices in your home network to access remote VPN servers without needing to install VPN software on every device.
- Airtime Fairness – Balances bandwidth of connected devices to improve overall throughput and efficiency
- Smart Connect – Intelligently switches each device's connection to the optimum available Wi-Fi band



Broad Wi-Fi Range

- Ultimate Range Wi-Fi – Internal antennas deliver a Wi-Fi signal to every corner of your home, making all of your connections more efficient and stable
- Beamforming Technology – Concentrates Wi-Fi signals towards individual devices to ensure stronger connections
- Seamless EasyMesh network – Transfer between signals without any drops or lag and manage your whole network using a centralized panel

Features



Ease of Use

- Intuitive Web UI – Ensures quick and simple installation without hassle
- WPS (Wi-Fi Protected Setup) – Help you to quickly add your mesh devices to the router's network with a tap
- Hassle-free Management with Tether App – Network management is made easy with the TP-Link Tether app, available on any Android and iOS device



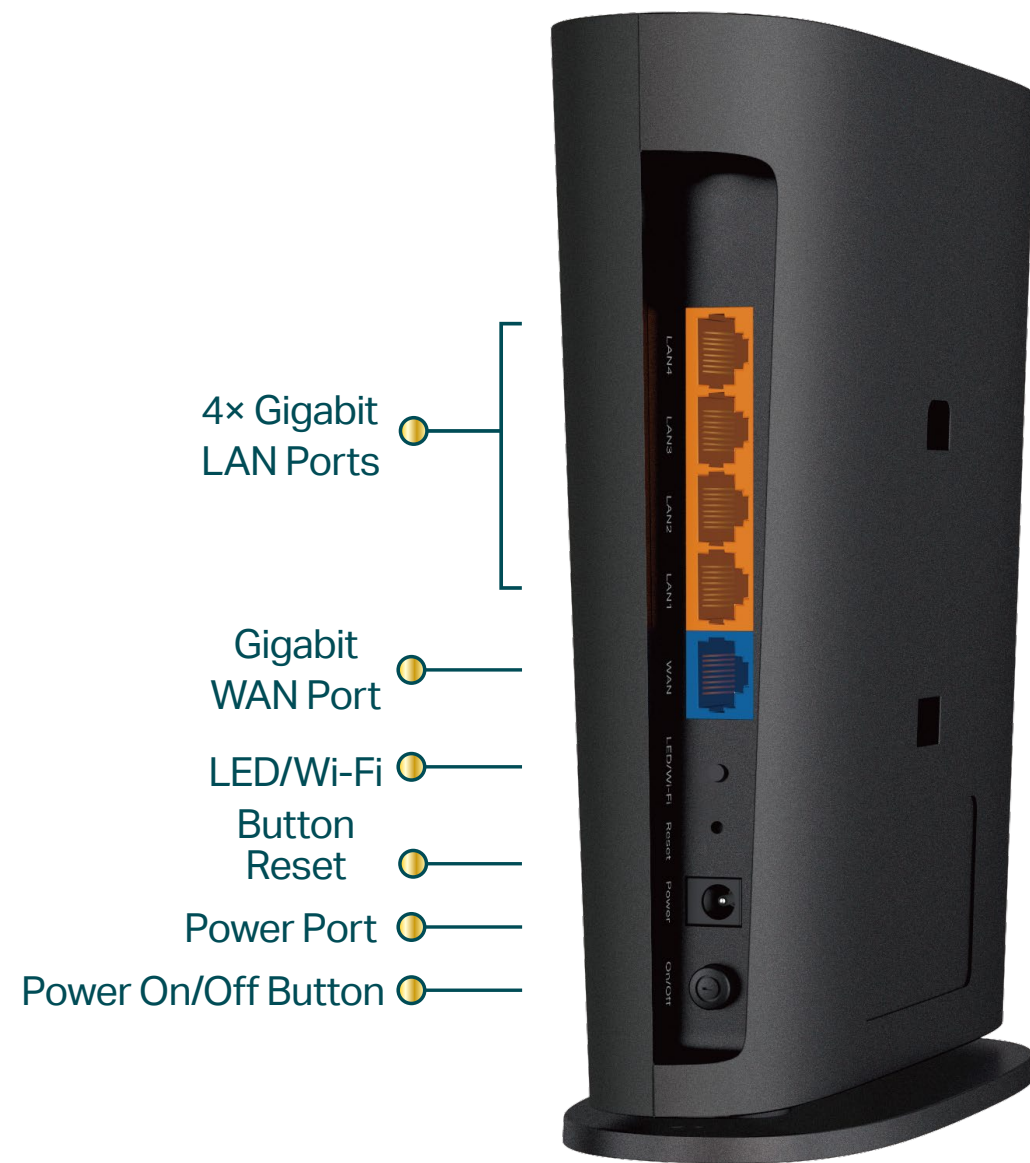
Robust Security

- HomeShield – TP-Link's premium security services keep your home network safe with cutting-edge features for network and IoT protection
- Guest Network – Provides separate access for guests to secure the home network
- Access Control – Establishes a blacklist or whitelist to allow or restrict certain devices to access the internet
- Encryptions for Secure Network – WPA/WPA2-Personal, WPA2/WPA3-Personal, WPA/WPA2-Enterprise encryptions provide active protection against security threats

Specifications

Hardware

- Ethernet Ports:
1 × Gigabit WAN Port + 4 × Gigabit LAN Ports
- Dimensions: 200 × 189 × 59 mm



Wireless

- Wireless: 4804 Mbps (5 GHz) + 574 Mbps (2.4 GHz), compatible with 11a/b/g/n/ac Wi-Fi standards
- Frequency: 2.4 GHz and 5 GHz
- Reception Sensitivity:
2.4GHz:
11n HT20 MCS0: -86dBm
11n HT20 MCS7: -63dBm
11n HT40 MCS0: -82dBm
11n HT40 MCS7: -60dBm
11ax HE20_MCS0:-96dBm, 11ax HE20_MCS7:-66dBm
11ax HE40_MCS0:-93dBm, 11ax HE40_MCS7:-63dBm
5GHz:
11ac VHT20_MCS0:-97dBm, 11ac VHT20_MCS8:-75dBm
11ac VHT40_MCS0:-94dBm, 11ac VHT40_MCS9:-70dBm
11ac VHT80_MCS0:-91dBm, 11ac VHT80_MCS9:-67dBm
11ac VHT160_MCS0:-88dBm, 11ac VHT160_MCS9:-63dBm
11ax HE20_MCS0:-97dBm, 11ax HE20_MCS11:-66dBm
11ax HE40_MCS0:-94dBm, 11ax HE40_MCS11:-63dBm
11ax HE80_MCS0:-91dBm, 11ax HE80_MCS11:-61dBm
11ax HE160_MCS0:-87dBm, 11ax HE160_MCS11:-58dBm
- Wireless Function: Enable/Disable Wireless Radio, WMM
- Wireless Security: WPA/WPA2-Personal, WPA2/WPA3-Personal, WPA/WPA2-Enterprise

Specifications

Software

- WAN Type: Dynamic IP/Static IP/PPPoE/PPTP(Dual Access)/L2TP(Dual Access)/DSLite/v6plus/OCN
- Management: Access Control, Local Management, Remote Management
- DHCP: Server, DHCP Client List, Address Reservation
- NAT Forwarding: Port Forwarding, Port Triggering, UPnP, DMZ
- Dynamic DNS: DynDns, NO-IP, TP-Link
- Network Access Management: Access Control, Parental Controls, Local Management Control
- Firewall Security: SPI Firewall, IP and MAC Address Binding
- Protocols: IPv4, IPv6
- Guest Network: 2.4 GHz Guest Network, 5 GHz Guest Network
- VPN Server & VPN Client: OpenVPN, PPTP VPN, L2TP/IPSec VPN

Others

- Certification:
CE, RoHS
- System Requirements:
Internet Explorer 11+, Firefox 12.0+, Chrome 20.0+, Safari 4.0+, or other JavaScript-enabled browser
Cable or DSL Modem (if needed)
Subscription with an internet service provider (for internet access)
- Environment:
Operating Temperature: 0°C~40°C (32°F ~104°F)
Operating Humidity: 10%~90% non-condensing
- Package Contents
Wireless Router Archer AX5400
Power Adapter
RJ45 Ethernet Cable
Quick Installation Guide



For more information, please visit

https://www.tp-link.com/products/details/?model=Archer+AX5400_V1

or scan the QR code left

*Maximum wireless signal rates are the physical rates derived from IEEE Standard 802.11 specifications. Actual wireless data throughput, wireless coverage, and number of connected devices are not guaranteed and will vary as a result of network conditions, client limitations, and environmental factors, including building materials, obstacles, volume and density of traffic, and client location.

*Use of 802.11ax (Wi-Fi 6) and its features including OFDMA, HE160, and Target Wake Time requires clients support the corresponding features. The 160 MHz bandwidth may be unavailable in the 5 GHz in some regions/countries due to regulatory restrictions. Actual power reduction by Target Wake Time may vary as a result of network conditions, client limitations, and environmental factors.

*The 802.11ax white paper defines standardized modifications to both the IEEE 802.11 physical layers (PHY) and the IEEE 802.11 Medium Access Control (MAC) layer as enabling at least one mode of operation capable of supporting improvement of at least four times the average throughput per station (measured at the MAC data service access point) in a dense deployment scenario.

*HomeShield includes the Free Basic Plan. Fees apply for the Pro Plan. Visit [tp-link.com/homeshield](https://www.tp-link.com/homeshield) for more information

*Use of MU-MIMO and/or WPA3 requires clients to also support the corresponding features.

*This router may not support all the mandatory features as ratified in Draft 3.0 of the IEEE 802.11AX specification.

*Further software upgrades for feature availability may be required.

*Actual network speed may be limited by the rate of the product's Ethernet WAN or LAN port, the rate supported by the network cable, Internet service provider factors and other environmental conditions.

©2023 TP-Link